

OH, SUSANNA!

S. FOSTER

F C7

f I came from A - la - ba - ma with my ban - jo on my knee, I'm
rained all night the day I left, the weath - er it was dry, The

F C7 1. F 2. F

goin' to Lou' - si - an - a my true love for to see. It
sun so hot I froze to death, Su - san - na don't you cry.

B^b F C7

Oh, Su - san - na, Oh! don't you cry for me, I've

F C7 F

come from A - la - ba - ma with my ban - jo on my knee.

CHIAPANECAS

(Duet)

MEXICAN FOLK SONG

F C7 F

f

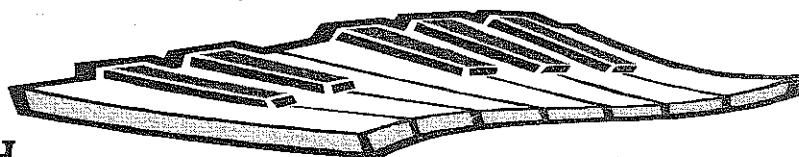
F C7 F C7 F

TIE



A Tie is a curved line that connects two notes of the same pitch. Hold the note for the combined value of the two notes.

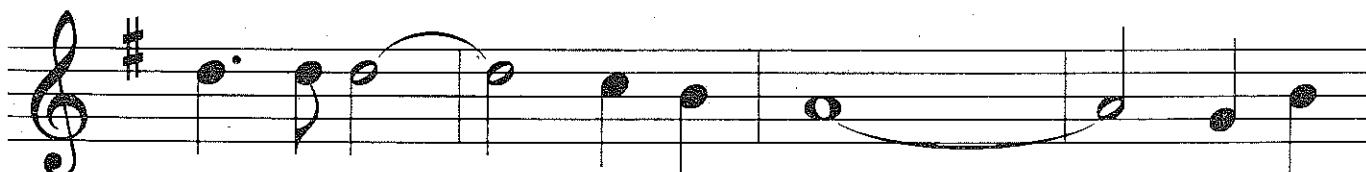
100. THE LEMONADE STAND



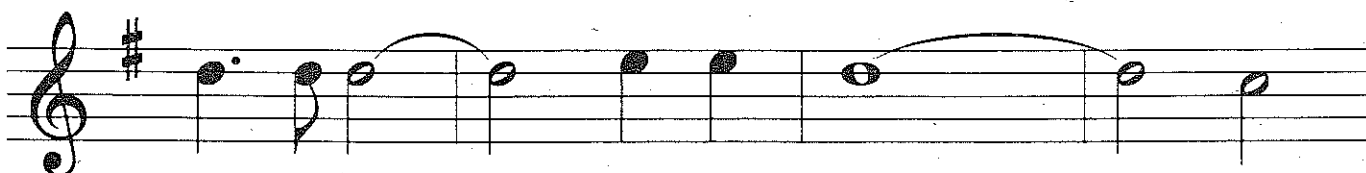
101. KUM BAH YAH



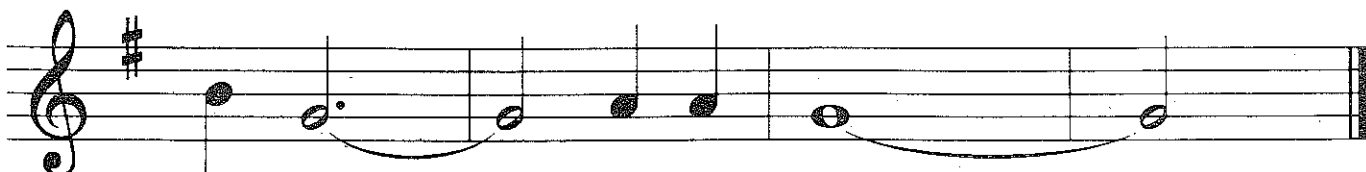
Kum Bah Yah, my Lord, Kum Bah Yah. Kum Bah



Yah, my Lord, Kum Bah Yah. Kum Bah



Yah, my Lord, Kum Bah Yah. Oh,



Lor - d, Kum Bah Yah.

110. OLD BRASS WAGON

Musical score for "Old Brass Wagon" in G major (one sharp) and 2/4 time. The score consists of four staves of music with lyrics underneath. The melody is simple and repetitive, with a dotted quarter note followed by an eighth note in the first measure of each line.

Cir - cle to the left, the old brass wag - on.

Cir - cle to the left, the old brass wag - on.

Cir - cle to the left, the old brass wag - on,

Your'e the one my dar - ling.

111. YANKEE DOODLE

Musical score for "Yankee Doodle" in G major (one sharp) and 4/4 time. The score consists of four staves of music with lyrics underneath. The melody is a simple, rhythmic tune with a dotted quarter note followed by an eighth note in the first measure of each line.

Yan - kee Doo - dle went to town a rid - ing on a po - ny,

Stuck a fea - ther in his hat and called it mac - a - ron - i.

Yan - kee Dood - dle keep it up. Yan - kee Doo - dle Dan - dy.

Mind the mus - ic and the step and with the girls be han - dy.

OH, SUSANNA!

S. FOSTER

F **C7**

f I came from A - la - ba - ma with my ban - jo on my knee, I'm
rained all night the day I left, the weath - er it was dry, The

F **C7** 1. **F** 2. **F**

goin' to Lou' - si - an - a my true love for to see. It
sun so hot I froze to death, Su - san - na don't you cry.

Bb **F** **C7**

Oh, Su - san - na, Oh! don't you cry for me, I've

F **C7** **F**

come from A - la - ba - ma with my ban - jo on my knee.

CHIAPANECAS

(Duet)

MEXICAN FOLK SONG

F **C7** **F**

f

f

F **C7** **F** **C7** **F**

OH, SUSANNA!

S. FOSTER

F C7

f I came from A - la - ba - ma with my ban - jo on my knee, I'm
rained all night the day I left, the weath - er it was dry, The

F C7 1. F 2. F

goin' to Lou' - si - an - a my true love for to see. It
sun so hot I froze to death, Su - san - na don't you cry.

Bb F C7

Oh, Su - san - na, Oh! don't you cry for me, I've

F C7 F

come from A - la - ba - ma with my ban - jo on my knee.

CHIAPANECAS

(Duet)

MEXICAN FOLK SONG

F C7 F

f

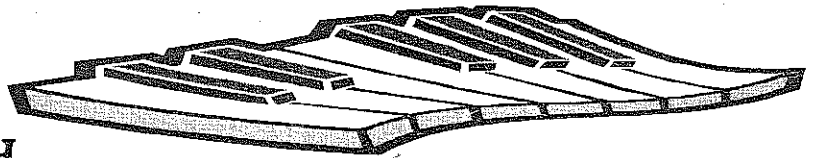
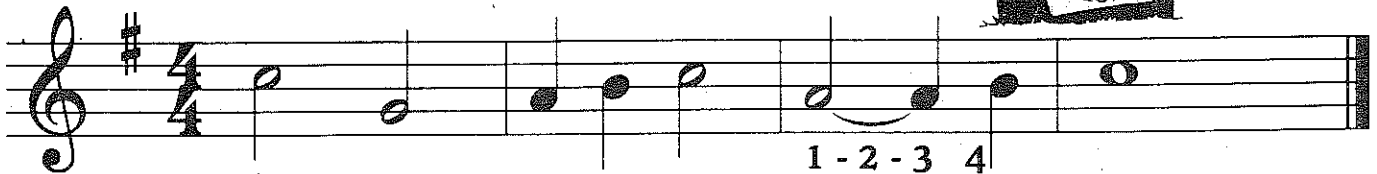
F C7 F C7 F

TIE



A Tie is a curved line that connects two notes of the same pitch. Hold the note for the combined value of the two notes.

100. THE LEMONADE STAND



101. KUM BAH YAH

Kum Bah Yah, my Lord, Kum Bah Yah. Kum Bah

Yah, my Lord, Kum Bah Yah. Kum Bah

Yah, my Lord, Kum Bah Yah. Oh,

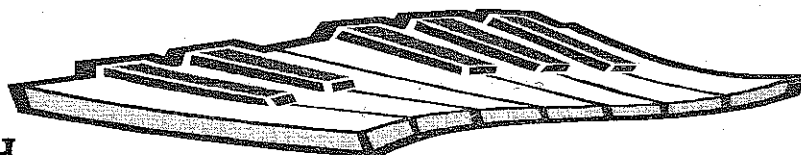
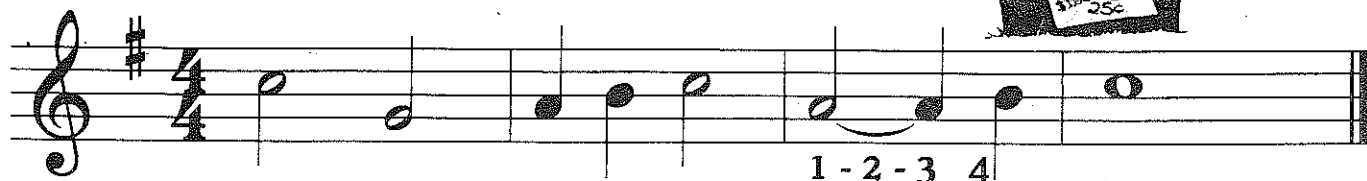
Lor - d, Kum Bah Yah.

TIE

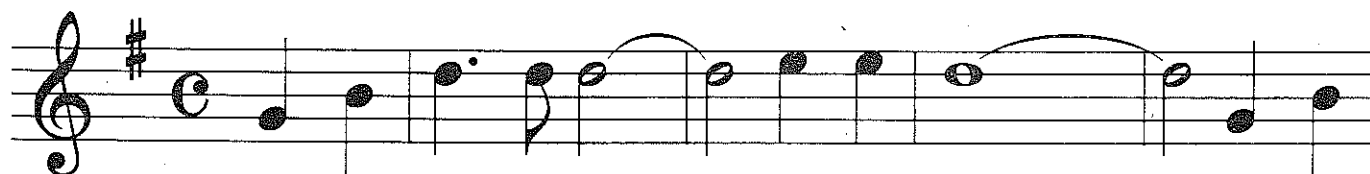


A Tie is a curved line that connects two notes of the same pitch. Hold the note for the combined value of the two notes.

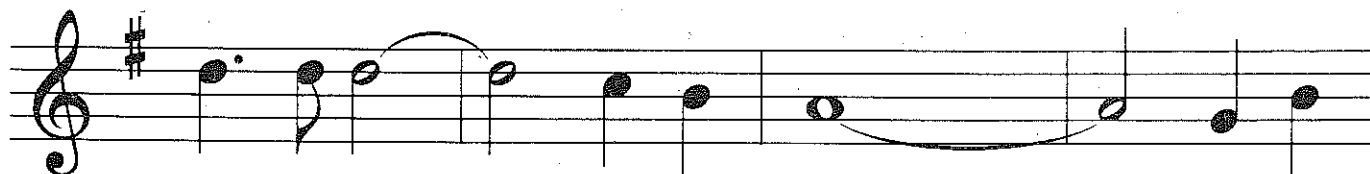
100. THE LEMONADE STAND



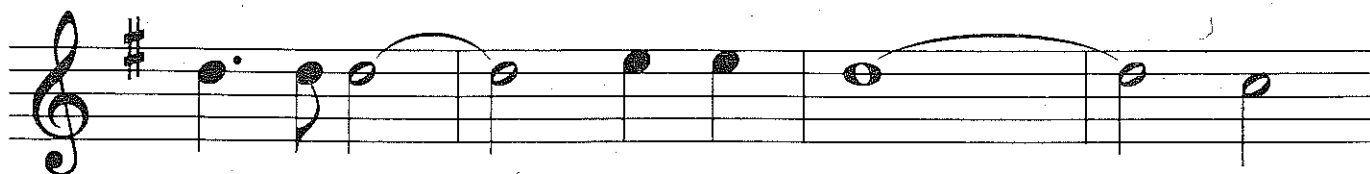
101. KUM BAH YAH



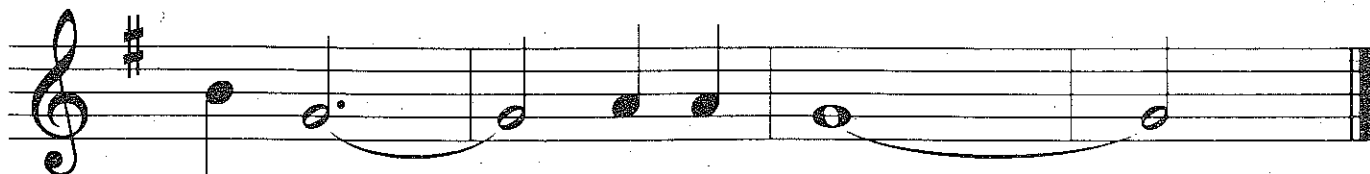
Kum Bah Yah, my Lord, Kum Bah Yah. Kum Bah



Yah, my Lord, Kum Bah Yah. Kum Bah



Yah, my Lord, Kum Bah Yah. Oh,



Lor - d, Kum Bah Yah.

110. OLD BRASS WAGON

Musical score for "Old Brass Wagon" in G major (one sharp) and 2/4 time. The score consists of four staves of music with lyrics underneath. The melody is simple and repetitive, with a dotted quarter note followed by an eighth note in the first two staves. The lyrics are: "Cir-cle to the left, the old brass wag-on. Cir-cle to the left, the old brass wag-on. Cir-cle to the left, the old brass wag-on, Your'e the one my dar-ling."

Cir-cle to the left, the old brass wag-on.

Cir-cle to the left, the old brass wag-on.

Cir-cle to the left, the old brass wag-on,

Your'e the one my dar-ling.

111. YANKEE DOODLE

Musical score for "Yankee Doodle" in G major (one sharp) and 4/4 time. The score consists of four staves of music with lyrics underneath. The melody is a simple eighth-note sequence. The lyrics are: "Yan-kee Doo-dle went to town a rid-ing on a po-ny, Stuck a fea-ther in his hat and called it mac-a-ron-i. Yan-keeDood-dle keep it up. Yan-keeDoo-dle Dan-dy. Mind the mus-ic and the step and with the girls be han-dy."

Yan-kee Doo-dle went to town a rid-ing on a po-ny,

Stuck a fea-ther in his hat and called it mac-a-ron-i.

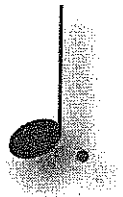
Yan-keeDood-dle keep it up. Yan-keeDoo-dle Dan-dy.

Mind the mus-ic and the step and with the girls be han-dy.

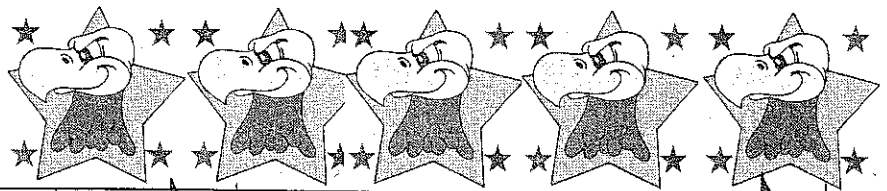


Dotted Quarter Note

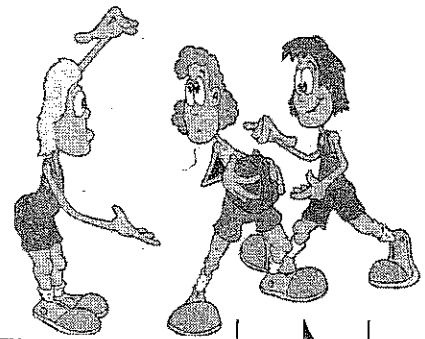
A dotted quarter note gets one and one half counts.



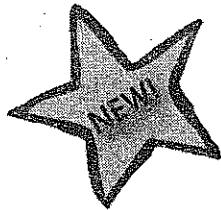
51. America




www.recorderfunbook.com/page32



52. Technical Foul

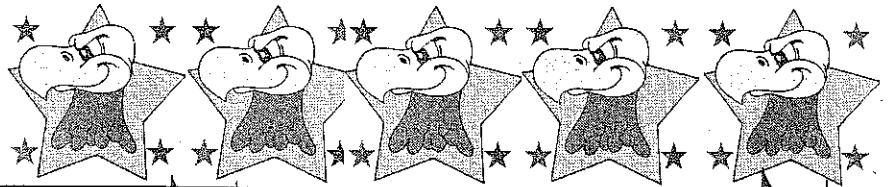


Dotted Quarter Note

A dotted quarter note gets one and one half counts.



51. America




www.recorderfunbook.com/page32

52. Technical Foul

